

# Energy Strategy – Progress update

**Steve Read**

Assistant Director (Environment and Public Protection)

23 January 2023



# Energy Strategy Contents



## Priorities

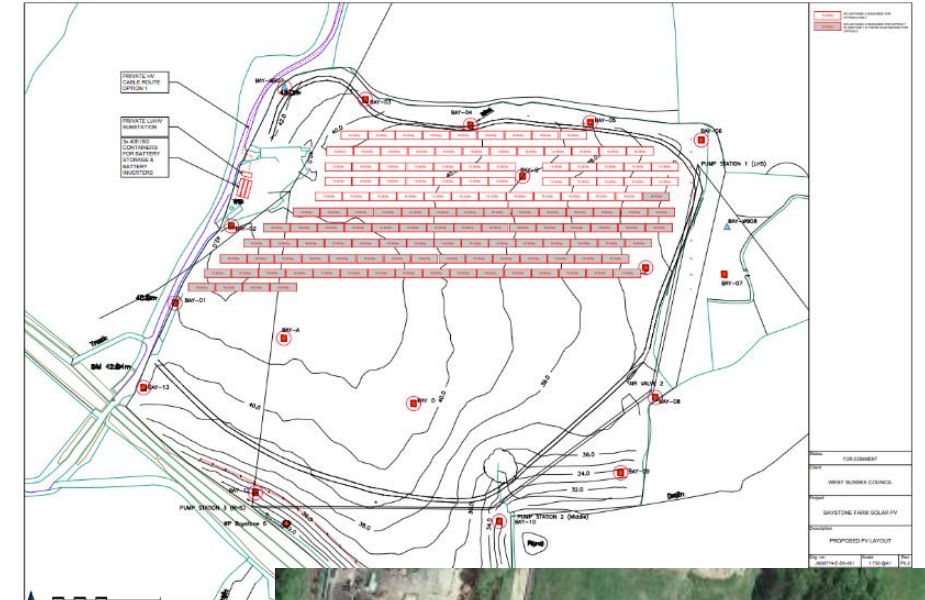
- Sustainable Energy Projects
- Reduce our emissions
- Develop social value
- Improve local resilience
- Generate savings/income

## Enablers

- Collaboration
- Data Management
- Innovation
- Green Energy Skills
- Future Energy Transition Hub



# Priority 1: Sustainable Energy Projects



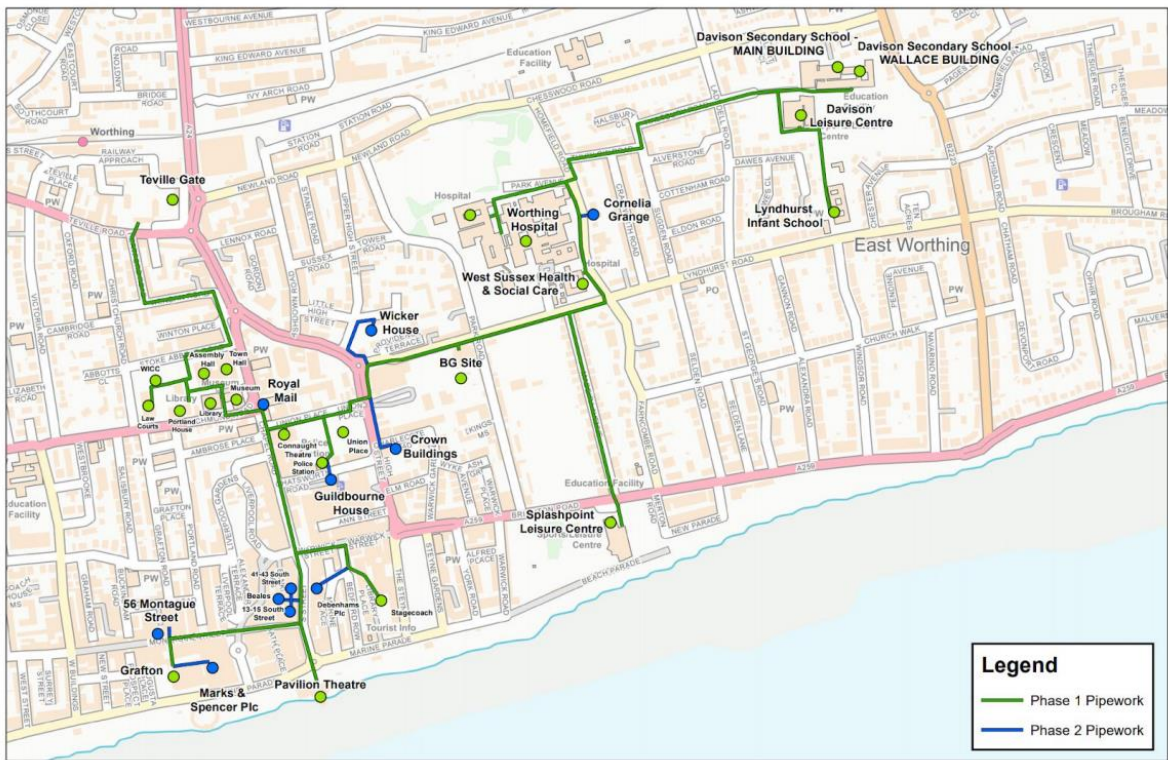


# Priority 2: Reduce our emissions



| Main Building   |           |             |                    |                                |               |
|---|-----------|-------------|--------------------|--------------------------------|---------------|
| Energy saving opportunity                                     | Relevance | Total Cost  | Energy Reduction % | Estimated Annual Energy Saving | Carbon Impact |
| Cavity wall insulation £35/m²                                 | Relevant  | £37,068.03  | 5%                 | £62.44                         | Low           |
| Solid wall insulation £100/m²                                 | N/A       |             | 10%                |                                | High          |
| Suspended Ceiling pad insulation £18/m²                       | N/A       |             | 9%                 |                                | Low           |
| Flat roof insulation £180/m²                                  | N/A       |             | 5%                 |                                | Low           |
| Flat roof replacement £250/m²                                 | N/A       |             | 11%                |                                | Medium        |
| Pitched roof replacement (including tiles and new insulation) | N/A       |             | 11%                |                                | Medium        |
| Pitched roof, new insulation at joists                        | N/A       |             | 12%                |                                | Medium        |
| Pitched roof, new insulation at rafters                       | N/A       |             | 11%                |                                | Medium        |
| Double Glazed Windows & Doors                                 | N/A       |             | 13%                |                                | Medium        |
| Thermostatic Radiator Valves                                  | N/A       |             | 11%                |                                | Medium        |
| Heat emitter replacement £110/m²                              | Relevant  | £124,552.49 | 5%                 | £65.04                         | Low           |
| Lighting upgrade  | Relevant  | £56,048.62  | 10%                | £405.17                        | Medium        |

- Lighting upgrade
- Improve air
- Improve me
- Boiler to High
- Boiler to Bio
- Direct Electr
- Storage Hea
- PV Panels
- Solar Therm.



ADEPT

LIVELABS2

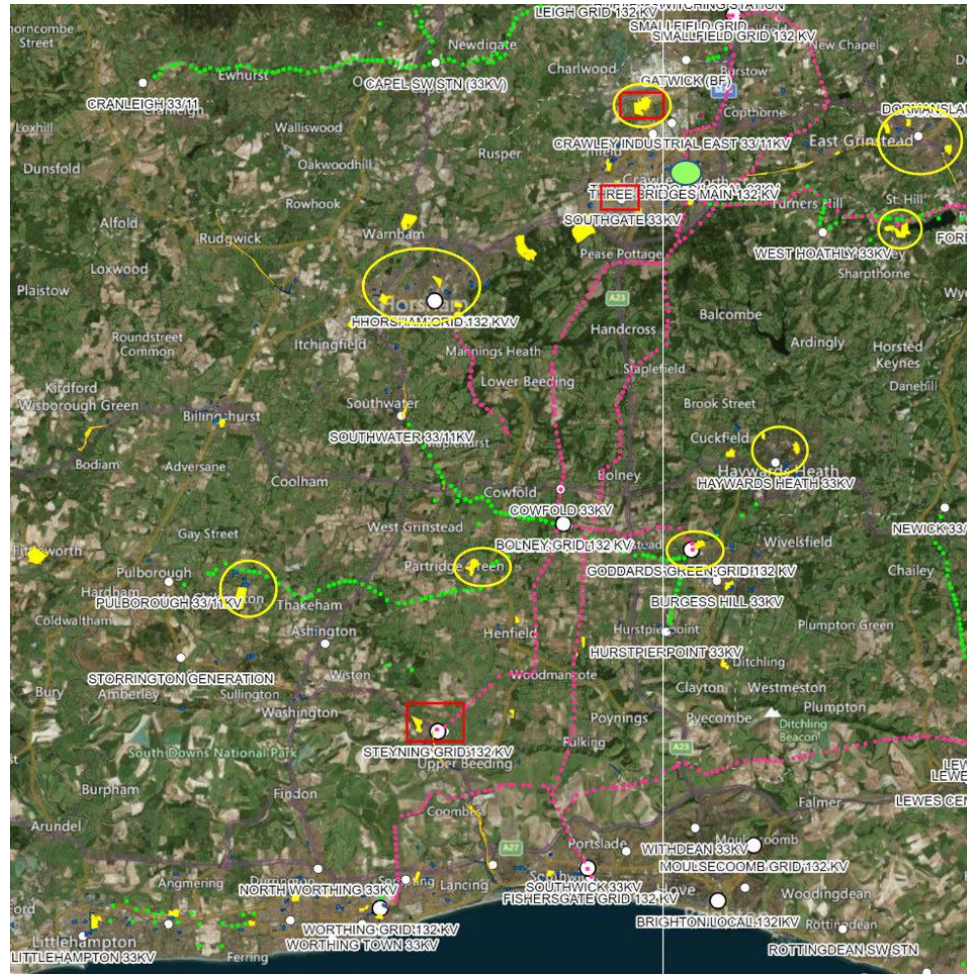
Decarbonising Local Roads

# Priority 3: Develop Social Value





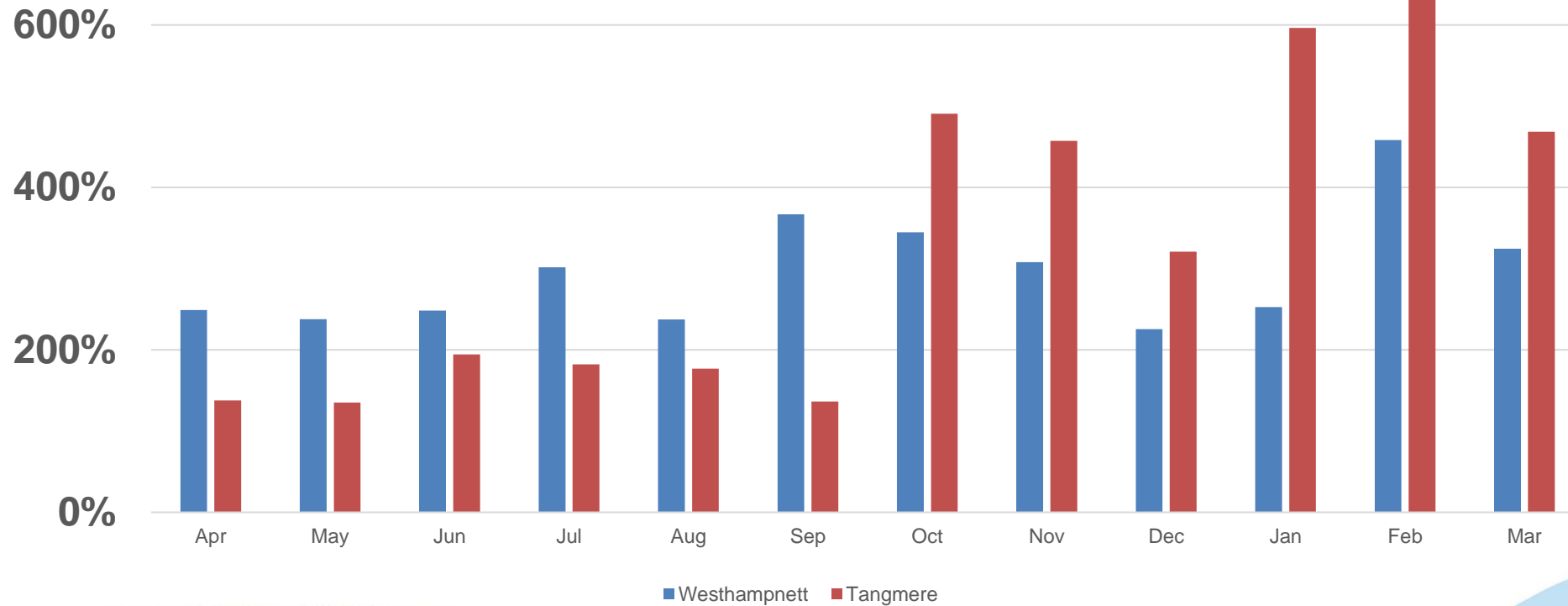
# Priority 4: Improve Local Resilience



# Priority 5: Generate savings/income



Income generation (2021/22 relative to 2020/21)



# Our Enablers

- Collaboration 
- Data Management 
- Innovation   
- Green Energy Skills  
- Future Energy Transition Hub: To be developed in 2024/25



Powering our  
community





# Summary



- Progress being made on both priorities and enablers
- Pace of progress being constrained by limitations of local electricity grid
- Benefits already realised include county council's finances insulated from energy price shocks
- Focus on sharing learning and partnering with local, regional & national organisations for specific goals